

# TUBWELD H

LONGITUDINAL LASER OR TIG WELDING MACHINE



## SPECIALIZED

Design for welding inox and galvanized tubes for HVAC (Heating Ventilating Air Conditioning) sector.



## EFFICIENT

It employs the latest laser fiber technology for the best finish.



## COMPACT

All components inside the machine (without peripherals).



## PRODUCTIVE

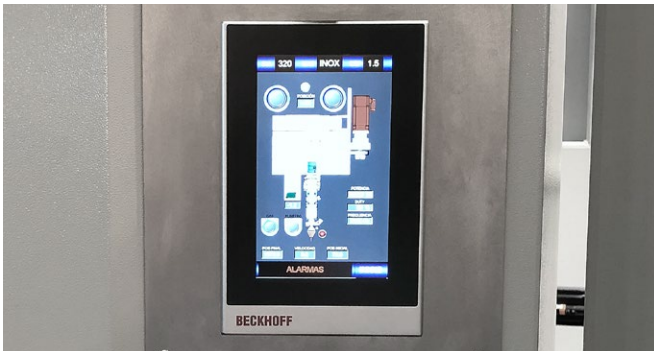
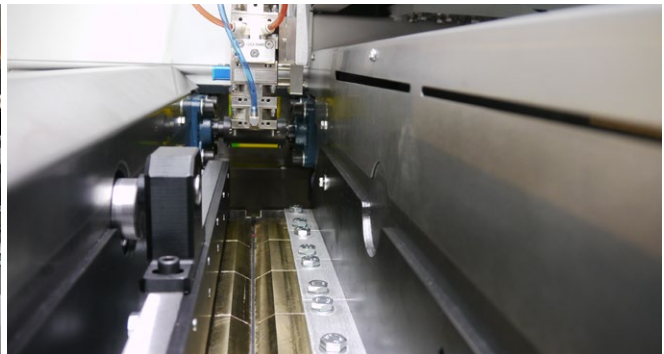
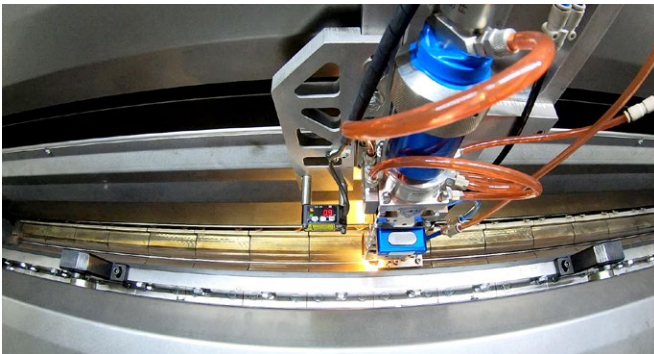
Clean, fast and automatic process.

**MOTOCONO®**



## TECHNICAL FEATURES:

Welding length range: Up to 1500 mm	Welding technology: Laser up to 2 Kw or TIG
Feasible diameter range: Ø120 – Ø840 mm	Cycle: 60 seconds, 90 pcs/hour
Maximum thickness: 2 mm	Materials: Carbon steel, stainless and galvanized
Power supply: 400V, 3-phase to 50/60 Hz	Cycle: Fully automatic
Size: 3100 x 1850 x 2200 mm	Control panel: PLC with 7" touch screen
Weight (approx.): 2600 Kg	Software control: Beckhoff



## CONTACT:

Calle Fenolleda 8, Pol. Ind. Nord  
(+34) 937 354 597  
Terrassa 08226 – Barcelona, España



Our machines are produce according the European Union safety requirements.



[www.motocono.com](http://www.motocono.com)